

CLEARFIELD-CONFIRM For the Confidence to Grow

CLEARFIELD-CONFIRM® testing gives you the confidence of knowing that the seed you purchase, whether from a certified seed seller or as farm-saved seed from another grower, has consistent quality. All sellers must submit their CLEARFIELD lentil seed to a certified independent lab to ensure that it has not co-mingled with other lentil seed. Be sure to ask for the test certificate number when you purchase seed from another grower: it's your assurance of seed purity.

The CLEARFIELD Commitment: Your Ticket to Value and Savings

By signing and abiding by the CLEARFIELD Commitment, the annual license for growers to use the CLEARFIELD trait, you help ensure the integrity and sustainability of the CLEARFIELD system. You also get access to savings on premium BASF crop protection products through the GrowForward Rewards program*. Save up to 10% on CLEARFIELD herbicides and up to 18% on HEADLINE® fungicide. Ask your retailer how to get the most out of your CLEARFIELD lentils with GrowForward Rewards.

The CLEARFIELD Advantage™ benefits CLEARFIELD lentil growers in the following ways:

- Save \$1/ac on GEMINI®, CHARTER®, DYVEL® DSP and DYVEL for all your cereal acres*.
- Get 100% respray coverage for ODYSSEY® DLX in the event of grassy weed control failure.

growforward
REWARDS 2010

*Minimum purchase of 150 acres of any one or combination of CLEARFIELD crops



Growing a Great Lentil Crop with CLEARFIELD

If you're growing CLEARFIELD® lentils for the first time, you can be confident you're backed by a complete network of support. To get the most from this network, you only need to:

- Purchase your CLEARFIELD lentil variety from the seller of your choice
- Ensure your CLEARFIELD lentil seed has passed the CLEARFIELD-CONFIRM® test
- Visit your CLEARFIELD lentil retailer to sign the CLEARFIELD Commitment license agreement and to discuss your registered CLEARFIELD lentil herbicide options.



"If you're a conventional lentil grower and you want to grow CLEARFIELD lentils next year, I would say there's just no question that you'll enjoy the ease of weed control, and you'll have a lot less headaches than you did before with the old systems. I can't see anybody not wanting to try it."

Brian Stirton,
Moose Jaw, Saskatchewan

To find out more about CLEARFIELD lentils, call AgSolutions® by BASF at 1-877-371-BASF (2273) or visit clearfield.ca

Always read and follow label directions.

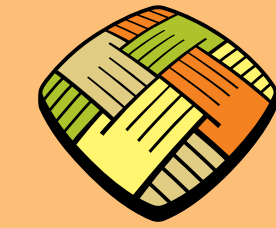
AgSolutions, CHARTER, CLEARFIELD, CLEARFIELD-CONFIRM, DYVEL, GEMINI, HEADLINE, ODYSSEY, SOLO and the UNIQUE CLEARFIELD SYMBOL are registered trade-marks of BASF. All other products mentioned are trade-marks or registered trade-marks of their respective companies. © 2009 BASF Canada Inc.

 **CLEARFIELD**
production system | for lentils

201107-09

2010

 **BASF**
The Chemical Company



CLEARFIELD
production system | for lentils

Growers agree.
It's the better way
to grow lentils.



production system | for lentils
CLEARFIELD


CLEARFIELD Lets You Forget About Weeds and Focus on Yield.



Why Grow CLEARFIELD Lentils?

1. Superior red and green varieties
2. Crop-safe, effective weed control
3. Easier harvest and greater yield potential.



Canada's Only Herbicide Tolerant Production System

Growing high-performing, high-quality lentils is tough enough, but with the **CLEARFIELD**® Production System for Lentils, you can strike weed control off your list. Whether you plan to grow red or green lentils, **CLEARFIELD** gives you a choice of high-yielding varieties with solid agronomics plus crop-safe, broad-spectrum weed control of the toughest grasses and flushing weeds.

A Great Crop Starts with Great Genetics

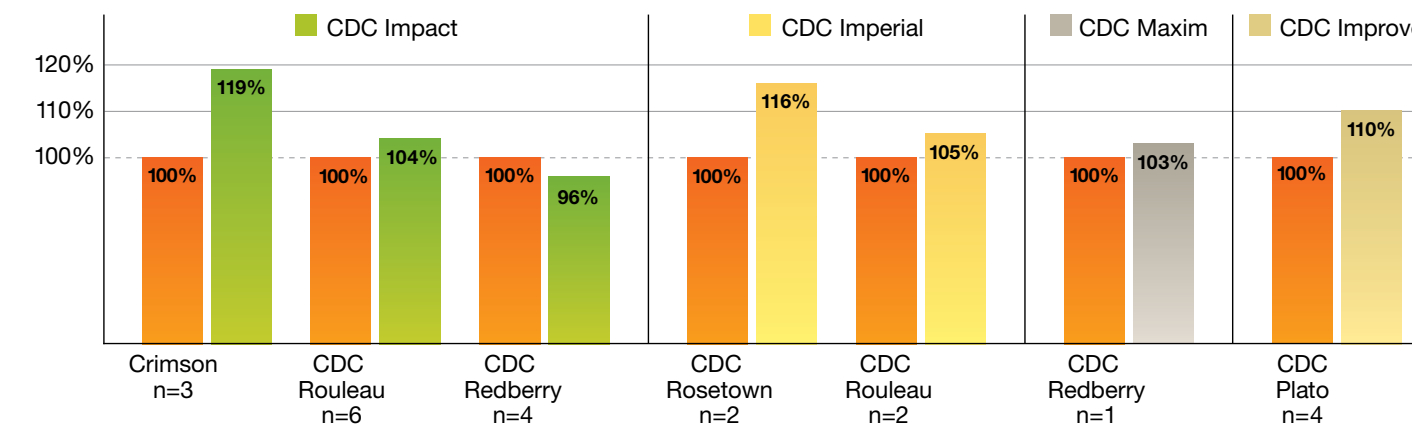
Developed by the Crop Development Centre, herbicide-tolerant **CLEARFIELD** lentils express leading agronomic traits, so they really deliver on yield.

	CDC Imperial CL	CDC Impala CL	CDC Impact CL	CDC Maxim CL	CDC Impress CL	CDC Improve CL
Type	Extra-small red	Extra-small red	Small red	Small red	Medium green	Large green
Yield	91% (118%)	92%	84% (108%)	101%	94%	88% (111%)
Ascochyta resistance	Good	Good	Good	Good	Good	Fair
Anthraxnose resistance (Race 1)	Good	Good	Poor	Good	Poor	Very poor
Maturity	Early	Early	Early	Early	Early-medium	Medium
Seed weight (g/1000)	30	31	34	40	52	67
Availability	Full	Full	Full	Full	Full	Full

Yield values from co-op and regional trials (2007 and 2008 Saskatchewan Seed Guides) comparisons to CDC Milestone. Yield values in brackets are comparisons to Laird averaged across all lentil-growing regions using conventional herbicides.

It's the Better Way to Grow Lentils.

Tried and True Grower Results



56 CLEARFIELD lentil trial entries and 373 GrowForward™ Yield Challenge entries in 2008. For complete results, please visit clearfield.ca

Effective Weed Control

With herbicides registered for **CLEARFIELD** lentils, you always get effective, broad-spectrum weed control. What's more, these **CLEARFIELD** herbicides are crop-safe in all soil zones. And, with an application of HEADLINE® fungicide, you'll add disease control and plant health benefits to help boost your yields.

Herbicides



- Broad-spectrum, flushing weed control*
- Premium grass control with an extended application window
- True 1-Pass weed control from application to crop flowering, saving you fuel, time and money.



- Balances exceptional rotational freedom with solid weed control
- Controls the tough grasses and targeted broadleaf weeds growing at the time of application.

* Includes chickweed, cleavers, green foxtail, redroot pigweed, shepherd's-purse, stinkweed, stork's-bill, volunteer canola and wild mustard.

Fungicides



- Exceptional disease control with unique plant health benefits mean an easier harvest with higher yields and crop quality.

What Growers Are Saying:

“ The main benefit of the **CLEARFIELD** system is less passes across the field. With conventional lentils we used to do a fall or spring application of Edge® and then an in-crop application of Sencor® and a separate one of a wild oat product like Poast®. Now with the **CLEARFIELD** lentils we do one application of ODYSSEY DLX, so we're saving two passes across the field, which adds up to a lot. ”

Trevor Rich, Craven, Saskatchewan

“ Yields in the 1,800 to 2,200 pounds an acre range are my norm for large green lentils, and **CLEARFIELD** Improve was at the top of that curve. I was very happy with the yield. ”

Vic Bruce, Tuxford, Saskatchewan

“ We never did get 100% weed control before with our granular products, whereas after two years of **CLEARFIELD**, I would say we're getting as close to complete control as we could expect. ”

Brian Brown, Loreburn, Saskatchewan